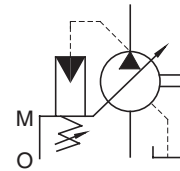


# "AR" Series Variable Displacement Piston Pumps – Single Pump, Pressure Compensator Type



Graphic Symbol



## Specifications

| Model Numbers            | Geometric Displacement<br>cm <sup>3</sup> /rev (cu.in./rev) | Operating Pressure<br>MPa (PSI) |               | Shaft Speed Range<br>r/min. |      | Approx. Mass<br>kg (lbs.) |
|--------------------------|---|---------------------------------|---------------|-----------------------------|------|---------------------------|
|                          |   | Rated                           | Intermittent* | Max.                        | Min. |                           |
| AR16-FR01*-20/2080/20950 | 15.8 ( .964)  | 16 (2320)                       |               | 1800                        | 600  | 9.8 (21.6)                |
| AR22-FR01*-20/2080/20950 | 22.2 (1.355)  |                                 |               | 1800                        | 600  |                           |

\* When setting the pressure, make sure the full cut-off pressure never exceeds the maximum intermittent pressure.

## Model Number Designation

| AR16                                       | -F                       | R   | 01  | B   | S  | -20           | *           |
|--|--------------------------|---|---|---|--|---------------|-------------|
| Series Number                              | Mounting                 | Direction of Rotation   | Control Type                                  | Pres. Adj. Range<br>MPa (PSI)   | Port Position  | Design Number | Design Std. |
| <b>AR16</b><br>(15.8 cm <sup>3</sup> /rev) | <b>F:</b><br>Flange Mtg. | (Viewed from<br>Shaft End)<br><b>R:</b> ★1<br>Clockwise<br>(Normal) | <b>01:</b><br>Pressure<br>Compensator<br>Type | <b>B:</b> 1.2 - 7<br>{170 - 1020}<br><b>C:</b> 2.0 - 16<br>{290 - 2320} | <b>None:</b><br>Axial Port<br><b>S:</b><br>Side Port | <b>20</b>     | Refer to ★2 |
| <b>AR22</b><br>(22.2 cm <sup>3</sup> /rev) |                          |   |   |   |  | <b>20</b>     |             |

★1. Available to supply pump with anti-clockwise rotation. Consult Yuken for details.

★2. Design Standards:  
None..... Japanese Standard "JIS"  
80..... European Design Standard  
950..... N. American Design Standard

## Pipe Flange Kits

Pipe flange kits are available.  
When ordering, specify the kit number from the table below.

| Pump Model Numbers     | Name of Port | Pipe Flange Kit Numbers |                          |                             |  |                             |
|------------------------|--------------|-------------------------|--------------------------|-----------------------------|--|-----------------------------|
|                        |              | Threaded Connection     |                          |                             | Socket Welding                                   |                             |
|                        |              | Japanese Standard "JIS" | European Design Standard | N. American Design Standard | Japanese Standard "JIS" European Design Standard | N. American Design Standard |
| AR16-FR01<br>AR22-FR01 | Suction      | F5-06-A-1021            | F5-06-A-10801            | F5-06-A-10950               | F5-06-B-1021                                     | F5-06-B-10901               |
|                        | Discharge *  | _____                   | _____                    | _____                       | _____  | _____                       |

★ Discharge port is available only for the threaded connections.

• Detail of the pipe flange kits are shown on [page 24](#).

## Mounting Bracket Kits

Mounting bracket available on separate order.  
Refer to [page 24](#) for dimensions of the Mtg. bracket.

| Pump Model Numbers | Mtg. Bracket Kit Numbers | Approx. Mass<br>kg (lbs.) |
|--------------------|--------------------------|---------------------------|
| AR16/AR22-FR01     | LP-1A-10                 | 2.2 (4.9)                 |

Note: The mounting bracket kit consists of a mounting bracket, two hex. bolts and two plain washers.