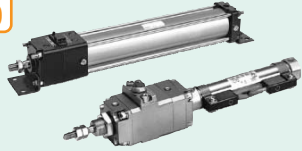


# Cylinders with Lock

## Fine Lock Cylinders : *CL* Lock-up Cylinder

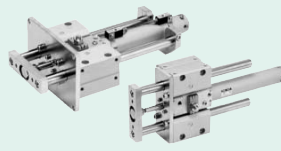
Page  
9-2-10



Type	Series	Action	Bore size (mm)	Locking method
Fine lock cylinder	<b>CLJ2</b>	Double acting, Single rod	16	Spring locking
	<b>CLM2</b>	Double acting, Single rod	20, 25	Pneumatic locking
	<b>CLG1</b>	Double acting, Single rod	32, 40	Spring and pneumatic locking
Lock-up cylinder	<b>CL1</b>	Double acting, Single rod	40, 50, 63, 80, 100, 125, 140, 160	Spring locking

## Fine Lock Cylinder : *MLGC* with Guide

Page  
9-4-2



Type of bearing	Series	Action	Bore size (mm)	Locking method
Slide bearing	<b>MLGCM</b>	Double acting, Single rod	20, 25	Spring locking (Exhaust locking)
Ball bushing bearing			32, 40	Spring and pneumatic locking
	<b>MLGCL</b>			Pneumatic locking
Features	Linear transfer unit with the cylinder with lock and the compact guide body			

## Cylinder with Lock: *CNG*

Page  
9-5-8



Series	Action	Bore size (mm)	Locking method
<b>CNG</b>	Double acting, Single rod	20, 25, 32, 40	Spring locking
Features	Cylinder with lock suitable for intermediate stroke stops, emergency stops and drop prevention		

## Cylinder with Lock: *MNB*

Page  
9-6-8



Series	Action	Bore size (mm)	Locking method
<b>MNB</b>	Double acting, Single rod	32, 40, 50	Spring locking
<b>MNBW</b>	Double acting, Double rod	63, 80, 100	
Features	Cylinder with lock suitable for intermediate stroke stops, emergency stops and drop prevention		

## Cylinder with Lock: *CNA*

Page  
9-7-8



Series	Action	Bore size (mm)	Locking method
<b>CNA</b>	Double acting, Single rod	40, 50, 63, 80, 100	Spring locking
<b>CNAW</b>	Double acting, Double rod		
Features	Cylinder with lock suitable for intermediate stroke stops, emergency stops and drop prevention		

## Cylinder with Lock: *CNS*

Page  
9-8-8



Series	Action	Bore size (mm)	Locking method
<b>CNS</b>	Double acting, Single rod	125, 140, 160	Spring locking
Features	Cylinder with lock suitable for intermediate stroke stops, emergency stops and drop prevention		

## Cylinder with Lock: *CLS*

Page  
9-9-8



Series	Action	Bore size (mm)	Locking method
<b>CLS</b>	Double acting, Single rod	125, 140, 160	Spring locking
Features	Cylinder with lock suitable for intermediate stroke stops, emergency stops and drop prevention		

## Compact Cylinder with Lock: *CLQ*

Page  
9-10-8



Series	Action	Bore size (mm)	Locking method
<b>CLQ</b>	Double acting, Single rod	20, 25, 32, 40, 50, 63, 80, 100	Spring locking
Features	Cylinder with lock suitable for intermediate stroke stops, emergency stops and drop prevention		

## Low Profile Guide Cylinder : *MLGP* with Lock

Page  
9-11-20



Type of bearing	Series	Operating system	Bore size (mm)	Locking method
Slide bearing	<b>MLGPM</b>	Double acting, Single rod	20, 25, 32, 40	Spring locking
Ball bushing bearing			<b>MLGPL</b>	
Features	Linear transfer unit with the locking cylinder and the compact guide body			

Compact Cylinder with Air Cushion and Lock : **RLQ**

Page  
**9-12-6**



Series	Action	Bore size (mm)
<b>RLQ</b>	Double acting, Single rod	32, 40, 50, 63
Features	Prevents dropping when air supply is cut off. Air cushion and lock unit are built inside compact cylinder. Bypass piping is standardized.	

Plate Cylinder with Lock: **MLU**

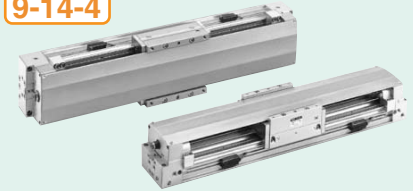
Page  
**9-13-8**



Series	Action	Bore size (mm)
<b>MLU</b>	Double acting, Single rod	25, 32, 40, 50
Features	New release-plate cylinder (elliptical piston) with lock. Ideal for maintaining supply pressure to prevent dropping of the load when residual pressure is released.	

Hy-rodless Cylinder: **ML1C**

Page  
**9-14-4**

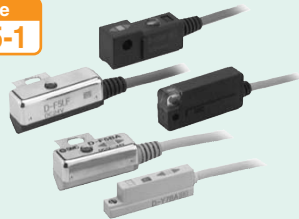


Guide type	Series	Action	Bore size (mm)
Cam follower guide	<b>ML1C</b>	Double acting	125, 140, 160
Features	Brake mechanism is compactly integrated in the slide table. Intermediate stops of the rodless cylinder possible.		

Related Products

Auto Switch: **D-**

Page  
**9-15-1**



Type	Features
Reed switch	General purpose type 2-color indication type
Solid state switch	General purpose 2-color indication type 2-color indication type with diagnostic output Water resistant (2-color indication type) With timer, Magnetic field resistant Heat resistant 2-color indication type Wide range detection type

Made to Order Specifications/-X

- Simple Specials..... P. 9-16-3
- Made to Order Common Specifications..... P. 9-16-19
- Made to Order Individual Specifications..... P. 9-10-111

Copper-free/20-

..... P. 9-17-1

Technical Data/Data

1. Bore Size Selection..... P. 9-18-2
2. Air Consumption and Required Air Volume..... P. 9-18-6
3. Theoretical Output Table..... P. 9-18-7