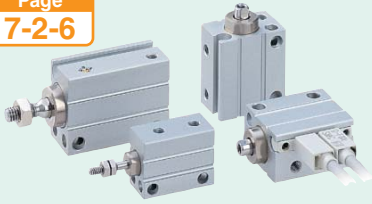


Compact Cylinders

Mini-free Mount Cylinder: CUJ

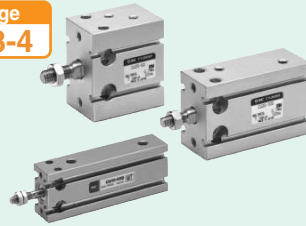
Page 7-2-6



Type	Series	Action	Bore size (mm)
Standard	CUJ	Double acting, Single rod	4, 6 8, 10
		Single acting (Spring return extend)	

Free Mount Cylinder: CU

Page 7-3-4



Type	Series	Action	Bore size (mm)
Standard	CU	Double acting, Single rod	6, 10 16, 20 25, 32
	CUW	Single acting (Spring return /extend)	
Non-rotating rod	CUK	Double acting, Double rod	
	CUKW	Double acting, Single rod	
Long stroke, Standard	CUK	Single acting (Spring return /extend)	
	CU	Double acting, Double rod	
Long stroke, Non-rotating rod	CU	Double acting, Single rod	
	CUK	Double acting, Single rod	

Free Mount Cylinder with Air Cushion : CU

Page 7-3-50



Type	Series	Action	Bore size (mm)
Standard	CU	Double acting, Single rod	20, 25 32

Compact Cylinder: CQS

Page 7-4-4



Type	Series	Action	Bore size (mm)
Standard	CQS	Double acting, Single rod	12, 16 20, 25
		Single acting (Spring return /extend)	
Non-rotating rod	CQSK	Double acting, Double rod	
	CQSK	Double acting, Single rod	
Anti-lateral load	CQS□S	Double acting, Single rod	

Compact Cylinder Guide Rod Type : CQM

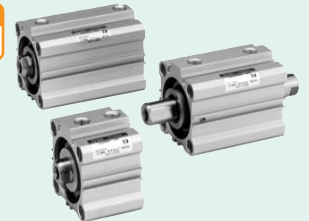
Page 7-5-2



Type	Series	Action	Bore size (mm)
Standard	CQM	Double acting, Single rod	12, 16 20, 25 32, 40 50

Compact Cylinder: CQ2

Page 7-6-2

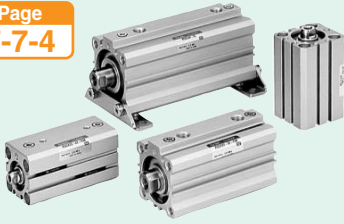


Type	Series	Action	Bore size (mm)
Standard	CQ2	Double acting, Single rod	12, 16, 20 25, 32, 40 50, 63, 80, 100
		Single acting (Spring return /extend)	
Non-rotating rod	CQ2W	Double acting, Double rod	
	CQ2K	Double acting, Single rod	
Axial piping (Centralized piping type)	CQ2KW	Double acting, Double rod	
		CQP2	
Large bore size	CQP2	Single acting (Spring return /extend)	
		CQ2	
Long stroke	CQ2	Double acting, Double rod	
		CQ2	
Anti-lateral load	CQ2□S	Double acting, Single rod	
With end lock	CBQ2	Double acting, Single rod	

Compact Cylinders

Compact Cylinder with Air Cushion : RQ

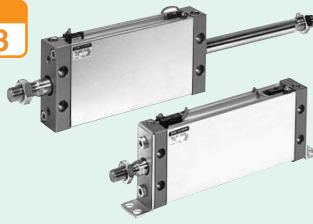
Page 7-7-4



Type	Series	Action	Bore size (mm)
Standard	RQ	Double acting, Single rod	20, 25, 32, 40, 50

Plate Cylinder: MU

Page 7-8-3



Type	Series	Action	Bore size (mm)
Standard	MU	Double acting, Single rod Single acting (Spring return /extend)	25, 32, 40, 50, 63
	MUW	Double acting, Double rod	

Related Products

Auto Switch: D-

Page 7-9-1



Type	Features
Reed switch	General purpose type 2-color indication type
Solid state switch	General purpose 2-color indication type 2-color indication type with diagnostic output
	Water resistant (2-color indication type) With timer, Magnetic field resistant Heat resistant 2-color indication type Wide range detection type

Made to Order Specifications/-X

- Simple Specials.....P. 7-10-3
- Made to Order Common Specifications.....P. 7-10-19
- Made to Order Individual Specifications.....P. 7-10-111

Copper-free/20-

.....P. 7-11-1

Technical Data/Data

1. Bore Size Selection.....P. 7-12-2
2. Air Consumption and Required Air Volume.....P. 7-12-6
3. Theoretical Output Table.....P. 7-12-7