

5 Port Solenoid Valves

5 Port/Direct Operated Poppet

VK3000

Page
3-2-1



Rubber seal

Body ported

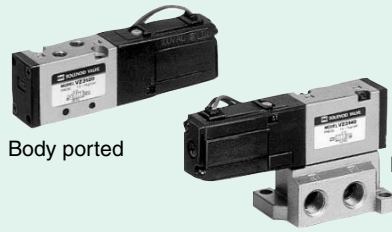
Base mounted

Model	Sonic conductance: C	Applicable cylinder size	Power consumption (W)
VK3000	0.54 dm ³ /(s·bar)	ø25	4.0

4/5 Port

VZ1000/3000/5000

Page
3-3-9



Rubber seal

Body ported

Base mounted

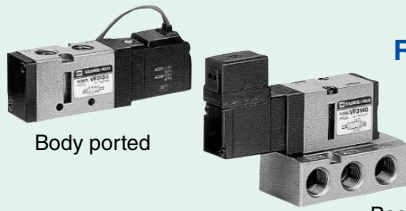
Model	Sonic conductance: C	Applicable cylinder size	Power consumption (W)
VZ1000	0.9 mm ² *	ø20	1.8
VZ3000	0.83 dm ³ /(s·bar)	ø40	
VZ5000	2.9 dm ³ /(s·bar)	ø63	

* Values in terms of effective area (S)

5 Port

VF1000/3000/5000

Page
3-4-5



Rubber seal

Body ported

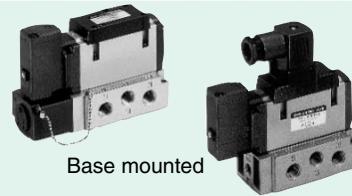
Base mounted

Model	Sonic conductance: C	Applicable cylinder size	Power consumption (W)
VF1000	0.53 dm ³ /(s·bar)	ø25	1.8
VF3000	3.1 dm ³ /(s·bar)	ø63	
VF5000	12 dm ³ /(s·bar)	ø140	

5 Port

VFR2000/3000/4000/5000/6000

Page
3-5-9



Rubber seal

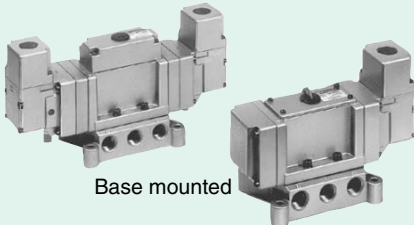
Base mounted

Model	Sonic conductance: C	Applicable cylinder size	Power consumption (W)
VFR2000	3.0 dm ³ /(s·bar)	ø63	1.8
VFR3000	8.7 dm ³ /(s·bar)	ø100	
VFR4000	14 dm ³ /(s·bar)	ø125	
VFR5000	25 dm ³ /(s·bar)	ø140	
VFR6000	41 dm ³ /(s·bar)	ø200	

Large Size 5 Port

VP4□50/4□70

Page
3-6-1



Rubber seal

Base mounted

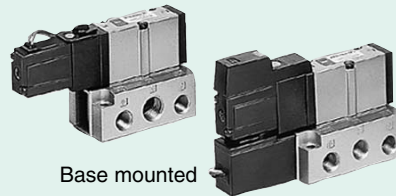
Model	Sonic conductance: C	Applicable cylinder size	Power consumption (W)
VP4□50	21 dm ³ /(s·bar)	ø140	12
VP4□70	300 mm ² *	ø300	

* Values in terms of effective area (S)

5 Port

VZS2000/3000

Page
3-7-7



Metal seal

Base mounted

Model	Sonic conductance: C	Applicable cylinder size	Power consumption (W)
VZS2000	1.4 dm ³ /(s·bar)	ø40	1.8
VZS3000	2.4 dm ³ /(s·bar)	ø63	

■ 5 Port

VFS1000/2000/3000/4000/5000/6000

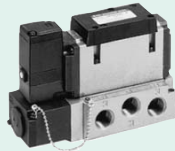
Page

3-8-9

Metal seal



Body ported



Base mounted

Model	Sonic conductance: C	Applicable cylinder size	Power consumption (W)
VFS1000	1.8 dm ³ /(s·bar)	ø50	1.8
VFS2000	2.8 dm ³ /(s·bar)	ø63	
VFS3000	5.8 dm ³ /(s·bar)	ø80	
VFS4000	12 dm ³ /(s·bar)	ø140	
VFS5000	20 dm ³ /(s·bar)	ø160	
VFS6000	38 dm ³ /(s·bar)	ø200	

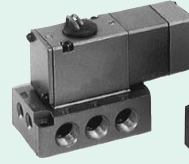
■ 5 Port

VS4□10

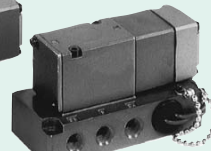
Page

3-9-1

Metal seal



Base mounted



Model	Sonic conductance: C	Applicable cylinder size	Power consumption (W)
VS4□10	4.1 dm ³ /(s·bar)	ø80	5.5

■ 5 Port

VQ7-6/7-8

Page

3-10-6

Metal seal
Rubber seal



Base mounted

Model	Sonic conductance: C	Applicable cylinder size	Power consumption (W)
VQ7-6	6.0 dm ³ /(s·bar)	ø100	1.0
VQ7-8	13 dm ³ /(s·bar)	ø140	

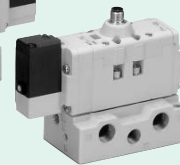
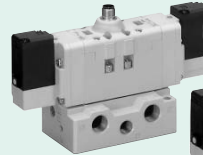
■ 5 Port

EVS7-6/7-8/7-10

Page

3-11-2

Metal seal
Rubber seal



Base mounted

Model	Flow rate	Applicable cylinder size	Power consumption (W)
EVS7-6	1200 ℓ/min (ANR)	ø100	1.8
EVS7-8	3000 ℓ/min (ANR)	ø160	
EVS7-10	5500 ℓ/min (ANR)	ø200	

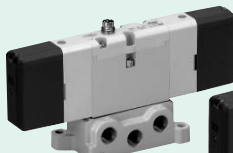
■ 5 Port

EVS1

Page

3-11-12

Metal seal
Rubber seal



Base mounted

Model	Flow rate	Applicable cylinder size	Power consumption (W)
EVS1-01	1000 ℓ/min (ANR)	ø100	1.0
EVS1-02	400 ℓ/min (ANR)	ø80	

■ 5 Port

VFN2000N/3000N

Page

3-12-1

Metal seal
Rubber seal



Base mounted

- * Compact design and large flow capacity
- * Low power consumption
- * NAMUR mounting interface
- * Multiple electrical entry option (Grommet, Terminal, DIN terminal type)