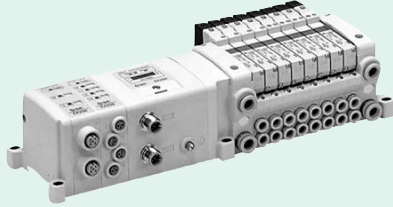


# 4/5 Port Solenoid Valves

■ 5 Port

## VQC1000/2000/4000

Page  
2-2-11



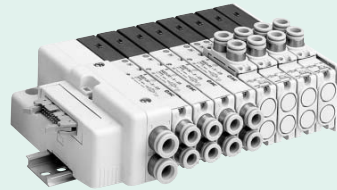
Metal seal  
Rubber seal

Model	Sonic conductance: C	Applicable cylinder size	Power consumption (W)
VQC1000	1.0 dm <sup>3</sup> /(s·bar)	ø40	1.0
VQC2000	3.2 dm <sup>3</sup> /(s·bar)	ø63	
VQC4000	7.3 dm <sup>3</sup> /(s·bar)	ø100	

■ 5 Port

## SQ1000/2000

Page  
2-3-6



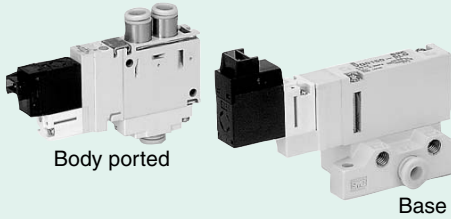
Rubber seal

Model	Sonic conductance: C	Applicable cylinder size	Power consumption (W)
SQ1000	0.83 dm <sup>3</sup> /(s·bar)	ø32	1.0
SQ2000	2.9 dm <sup>3</sup> /(s·bar)	ø63	

■ 5 Port

## VQ0000/1000/2000

Page  
2-4-8



Body ported

Base mounted

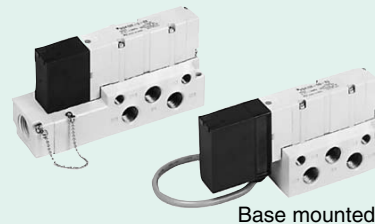
Metal seal  
Rubber seal

Model	Sonic conductance: C	Applicable cylinder size	Power consumption (W)
VQ0000	0.53 dm <sup>3</sup> /(s·bar)	ø25	1.0
VQ1000	1.0 dm <sup>3</sup> /(s·bar)	ø40	
VQ2000	3.2 dm <sup>3</sup> /(s·bar)	ø63	

■ 5 Port

## VQ4000

Page  
2-5-4



Base mounted

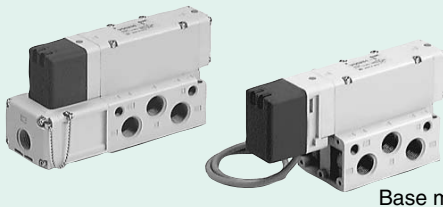
Metal seal  
Rubber seal

Model	Sonic conductance: C	Applicable cylinder size	Power consumption (W)
VQ4000	7.3 dm <sup>3</sup> /(s·bar)	ø100	1.0

■ 5 Port

## VQ5000

Page  
2-6-4



Metal seal  
Rubber seal

Plug Lead Unit

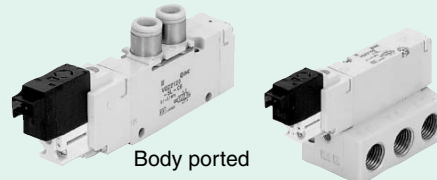
Base mounted

Model	Sonic conductance: C	Applicable cylinder size	Power consumption (W)
VQ5000	17 dm <sup>3</sup> /(s·bar)	ø160	1.0

■ 5 Port

## VQZ1000/2000/4000

Page  
2-7-6



Body ported

Base mounted

Metal seal  
Rubber seal

Model	Sonic conductance: C	Applicable cylinder size	Power consumption (W)
VQZ1000	1.3 dm <sup>3</sup> /(s·bar)	ø40	0.5
VQZ2000	2.3 dm <sup>3</sup> /(s·bar)	ø63	
VQZ4000	4.6 dm <sup>3</sup> /(s·bar)	ø80	

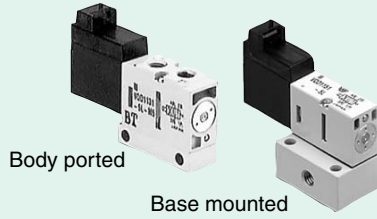
\* "C" and "S" in the table are the representative values for 2 position single 4/2 → 5/3 (A/B → EA/EB).

■ 4 Port


**VQD1000**

Page  
**2-8-4**

Rubber seal



Model	Sonic conductance: C	Applicable cylinder size	Power consumption (W)
<b>VQD1000</b>	0.19 dm <sup>3</sup> /(s·bar)	ø25	2.0

 \* "C" and "S" in the table are the representative values for 2 position single 4/2 → 5/3 (A/B → EA/EB).