

# Process Valves

## For Various Fluids Control

### Direct Operated 2 Port

#### VCA20/30/40

For air



Page  
17-2-7

Valve type	Port size	Orifice size (mm $\varnothing$ )
N.C.	Rc 1/4 to 3/4	3 to 10

### Direct Operated 2 Port

#### VCB20/30/40

For heated water



Page  
17-2-21

Valve type	Port size	Orifice size (mm $\varnothing$ )
N.C.	Rc 1/8 to 3/4	2 to 10

### Direct Operated 2 Port

#### VCL20/30/40

For oil



Page  
17-2-29

Valve type	Port size	Orifice size (mm $\varnothing$ )
N.C.	Rc 1/8 to 3/4	2 to 10

### Direct Operated 2 Port

#### VCS20/30/40

For steam



Page  
17-2-39

Valve type	Port size	Orifice size (mm $\varnothing$ )
N.C.	Rc 1/8 to 3/4	2 to 10

### Direct Operated 2 Port

#### VCW20/30/40

For water



Page  
17-2-49

Valve type	Port size	Orifice size (mm $\varnothing$ )
N.C./N.O.	Rc 1/8 to 3/4	2 to 10

### Compact Direct Operated 2 Port

#### VDW10/20/30

For water, air



Page  
17-2-61

Valve type	Port size	Orifice size (mm $\varnothing$ )
N.C.	M5 to Rc 1/4	1 to 4

### Compact Direct Operated 3 Port

#### VDW200/300

For water, air



Page  
17-2-74

Valve type	Port size	Orifice size (mm $\varnothing$ )
C.O.	M5 to Rc 1/4	1 to 4

### Pilot Operated 2 Port

#### VQ20/30

For dry air



Page  
17-2-79

Valve type	Port size	Orifice size (mm $\varnothing$ )
N.C.	$\varnothing$ 6 to $\varnothing$ 12	VQ20: 3.4 VQ30: 4.8

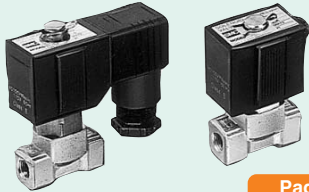
The models VX21/22/23 have been revised. For details, please refer to our catalog no. ES70-23A.  
 The models VX31/32/33 have been revised. For details, please refer to our catalog no. ES70-26A.  
 Similar updating for other VX\* series are scheduled to follow shortly.

**For Various Fluids Control**

**Direct Operated 2 Port**

**VX21/22/23**

For air, gas, vacuum, water, steam, oil



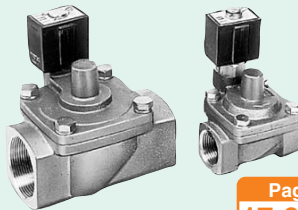
Page  
17-3-17

Valve type	Port size	Orifice size (mmø)
N.C./N.O.	Rc 1/8 to 1/2 32 A to 50 A	2 to 10

Water Hammer Relief/  
Pilot Operated 2 Port

**VXR21/22/23**

For water, oil



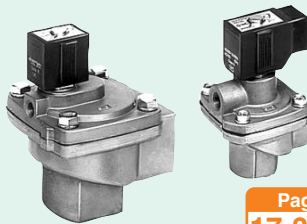
Page  
17-3-53

Valve type	Port size	Orifice size (mmø)
N.C./N.O.	Rc 1/2 to 2	20 to 50

**2 Port for Dust Collector**

**VXF21/22**

For air, water, oil



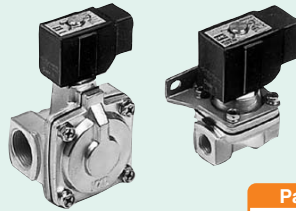
Page  
17-3-71

Valve type	Port size	Orifice size (mmø)
N.C.	Rc 3/4 to 1 1/2	20 to 40

**Pilot Operated 2 Port**

**VXD21/22/23**

For air, gas, water, oil



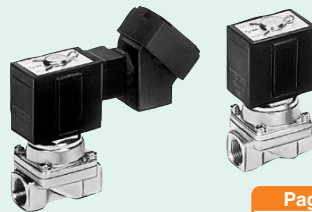
Page  
17-3-33

Valve type	Port size	Orifice size (mmø)
N.C./N.O.	Rc 1/4 to 1 3/8 2 A to 50 A	10 to 50

Pilot Operated/  
2 Port for Zero Differential Pressure

**VXZ22/23**

For air, gas, vacuum, water, oil



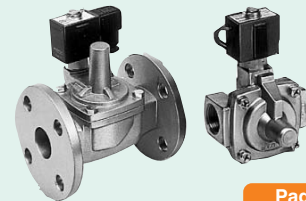
Page  
17-3-61

Valve type	Port size	Orifice size (mmø)
N.C./N.O.	Rc 1/4 to 1	10 to 25

**Pilot Operated 2 Port**

**VXP21/22/23**

For air, gas, steam, water, oil



Page  
17-3-43

Valve type	Port size	Orifice size (mmø)
N.C./N.O.	Rc 1/4 to 1 3/8 2 A to 50 A	10 to 50

Pilot Operated/  
2 Port for High Pressure

**VXH22**

For air, water, oil



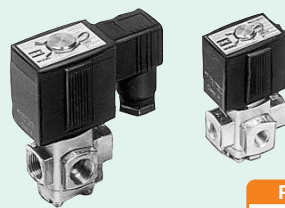
Page  
17-3-69

Valve type	Port size	Orifice size (mmø)
N.C.	Rc 1/4 to 1 1/2	10

**Direct Operated 3 Port**

**VX31/32/33**

For air, gas, vacuum, water, steam, oil



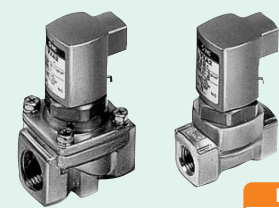
Page  
17-3-81

Valve type	Port size	Orifice size (mmø)
N.C./N.O./C.O.	Rc 1/8 to 3/8	1.5 to 4

**Direct Operated 2/3 Port**

**VXA21/22, VXA31/32**

For air, gas, vacuum, water, oil



Page  
17-3-93

Model	Valve type	Port size	Orifice size (mmø)
VXA21/22	N.C./N.O.	Rc1/8 to 1/2	3 to 10
VXA31/32	C.O.	Rc1/8 to 3/8	1.5 to 4

# Process Valves

## For General Pneumatic Fluids

Process Valve for Controlling  
General Purpose Fluids

### VNA

2 port for compressed air and  
air-hydro circuit control



Page  
17-4-5

Valve type	Port size	Orifice size (mmØ)
N.C./N.O./C.O.	Rc 1/8 to 2	10 to 50

Process Valve

### VNB

2 port for various fluid controls



Page  
17-4-13

Valve type	Port size	Orifice size (mmØ)
N.C./N.O./C.O.	Rc 1/8 to 23 2 A to 50 A	7 to 50

Coolant Valve

### VNC

For control of cutting oils  
(for machine tool) and coolant liquids



Page  
17-4-21

Valve type	Port size	Orifice size (mmØ)
N.C./N.O./C.O.	Rc 1/8 to 23 2 A to 50 A	7 to 80

Coolant Valve

### VNH

For control of high pressure cutting oils  
(for machine tool) and coolant liquids



Page  
17-4-31

Valve type	Port size	Orifice size (mmØ)
N.C./N.O./C.O.	Rc 3/8 to 1 32 A to 80 A	7.1 to 15.8

Steam Valve

### VND

2 port for steam control



Page  
17-4-37

Valve type	Port size	Orifice size (mmØ)
N.C./N.O.	Rc 1/8 to 23 2 A to 50 A	7 to 50

Related Products

High Purity Chemical Valve

**LVC** Page 17-5-3



High Purity Chemical Valve

**LVA** Page 17-5-17



High Purity Chemical Valve

**LVH** Page 17-5-27



High Purity Chemical Valve

**LVD** Page 17-5-40



Air Operated Chemical Valve

**LVQ** Page 17-5-63



High Purity Fluoropolymer Fittings

HYPER FITTING®: **LQ<sup>1</sup>/<sub>2</sub>** Page 17-5-91



High Purity Fluoropolymer Needle Valve

**LVN** Page 17-5-132



High Purity Fluoropolymer Tubing

Tubing: **TL/TIL** Page 17-5-136



Process Pump

**PA/PAX/PB** Page 17-5-141

