

Modular Style

F.R.L. Unit, Air Filter, Regulator

Modular F.R.L. Combination: AC

Page
14-2-5



Combination component	Port size	Set pressure (MPa)	Page
Air filter, Regulator, Lubricator (AF + AR + AL)	M5 x 0.8 to 1	0.05 to 0.85 ^{Note)}	14-2-12
Filter regulator, Lubricator (AW + AL)	M5 x 0.8 to 3/4	0.05 to 0.85 ^{Note)}	14-2-16
Air Filter, Regulator (AF + AR)	M5 x 0.8 to 1	0.05 to 0.85 ^{Note)}	14-2-18
Air filter, Mist separator, Regulator (AF + AFM + AR)	1/8 to 3/4	0.05 to 0.85	14-2-20
Filter regulator, Mist separator (AW + AFM)	1/8 to 3/4	0.05 to 0.85	14-2-22

Note) Set pressure for M5 type is 0.05 to 0.7 MPa.

Air Filter: AF

Page
14-2-33



Series	AF10 to 60
Port size	M5 x 0.8 to 1
Filtration	5 μm

Mist Separator: AFM

Page
14-2-40



Series	AFM20 to 40
Port size	1/8 to 1/4
Filtration	0.3 μm

Micro Mist Separator: AFD

Page
14-2-43



Series	AFD20 to 40
Port size	1/8 to 3/4
Filtration	0.01 μm

Regulator: AR

Page
14-2-46



Series	AR10 to 60
Port size	M5 x 0.8 to 1
Set pressure	0.05 to 0.85 MPa ^{Note)}

Note) Set pressure for M5 type is 0.05 to 0.7 MPa.

Regulator with Back Flow Mechanism : AR

Page
14-2-54



Series	AR20K to 60K
Port size	1/8 to 1
Set pressure	0.05 to 0.85 MPa

Modular Style Lubricator, Filter Regulator, Mist Separator Regulator

Lubricator: AL

Page
14-2-60



Series	AL10 to 60
Port size	M5 x 0.8 to 1
Bowl capacity	7 to 135 cm ³

Filter Regulator: AW

Page
14-2-66



Series	AW10 to 40
Port size	M5 x 0.8 to 3/4
Set pressure	0.05 to 0.85 MPa ^{Note)}
Filtration	5 μm

Note) Set pressure for M5 type is 0.05 to 0.7 MPa.

Filter Regulator with Back Flow Function : AW

Page
14-2-74



Series	AW20K to 40K
Port size	1/8 to 3/4
Set pressure	0.05 to 0.85 MPa
Filtration	5 μm

Mist Separator Regulator : AWM

Page
14-2-78



Series	AWM20 to 40
Port size	1/8 to 1/2
Set pressure	0.05 to 0.85 MPa
Filtration	0.3 μm

Micro Mist Separator Regulator : AWD

Page
14-2-82



Series	AWD20 to 40
Port size	1/8 to 1/2
Set pressure	0.05 to 0.85 MPa
Filtration	0.01 μm

Soft Start-up Valve

Soft Start-Up Valve : AV2000 to 5000

Page
14-3-1



Application/ Characteristics	Start-up valve for low speed air supply and for quick exhaust by cutting off air supply.
Port size	1/4, 3/8, 1/2
Operating pressure range	0.1 to 1 MPa

Lube Unit

Lube Unit: AU100/200/300

Page
14-3-11



Port size	1/8, 1/4, 3/8
Set pressure (MPa)	0.05 to 0.7
Filtration	5 μm

Large Flow Air Filter

Air Filter: AF800/900

Page
14-3-13



Port size	1 1/4, 1 1/2, 2
Filtration	5 μm

Pressure Control Equipment

Miniature Regulator: ARJ

Page
14-4-1

ARJ1020F



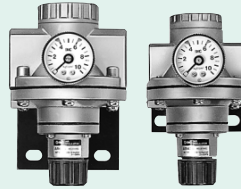
ARJ210

ARJ310

Series	ARJ1020F	ARJ210	ARJ310
Application/Characteristics	Direct operated relieving type w/ backflow function	Direct operated relieving type	
Port size/ Tubing O.D.	IN	M5 male	1/8 male & M5 x 0.8 female
	OUT	ø4, ø6	M5 x 0.8 female ø1/8, ø4, ø6, ø5/32, ø1/4
Set pressure (MPa)	0.1 to 0.7		0.2 to 0.7

Pilot Operated Regulator: AR425 to 925, AR435 to 935

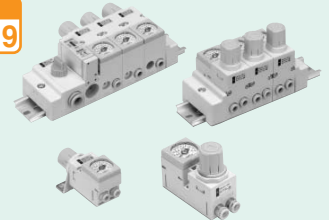
Page
14-4-15



Application/Characteristics	Internal pilot type Relieving type
Port size	1/4, 3/8, 1/2, 3/4 1 1/4, 1 1/2, 2
Set pressure (MPa)	AR425 to 925: 0.05 to 0.83 AR435 to 935: 0.02 to 0.2

Compact Manifold Regulator: ARM10/11

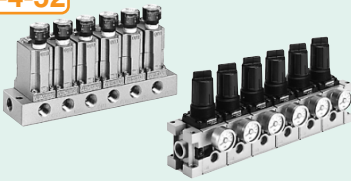
Page
14-4-19



Series	ARM10	ARM11
Application/Characteristics	Manifold (Common or individual IN)	Single unit
Connecting tubing O.D.	IN	ø6, ø8, ø10, ø1/4, ø5/16, ø3/8
	OUT	ø4, ø6, ø5/32, ø1/4
Set pressure (MPa)	0.05 to 0.7	

Regulator Manifold: ARM

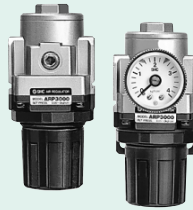
Page
14-4-52



Series	ARM1000/2000	ARM2500/3000
Application/Characteristics	Manifold (Common IN, Individual IN) Direct operated relieving type with backflow function	Manifold (Common IN, Individual IN) Modular style
Port size	1/8	1/4 to 3/8
Set pressure (MPa)	0.05 to 0.7	0.05 to 0.85

Direct Operated Precision Regulator: ARP

Page
14-4-59



Application/Characteristics	Sensitivity 0.001 MPa Direct-driven, bleed type (with relieving function)
Port size	1/4
Set pressure (MPa)	0.005 to 0.3

Regulator for 2 MPa: ARX20

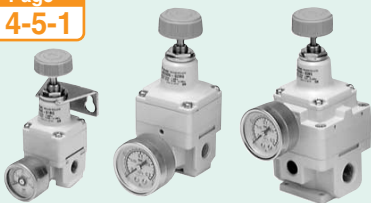
Page
14-4-61



Application/Characteristics	Compliant for inlet supply pressure of 2 MPa. Best suited for adjusting pressure discharged from small compressors.
Port size	1/8, 1/4
Set pressure (MPa)	Standard type: 0.05 to 0.85

Precision Regulator: IR1000/2000/3000

Page
14-5-1



Series	IR1000	IR2000	IR3000
Application/Characteristics	Tension controller Contact pressure control Sensitivity: 0.2% F.S. Max. Repeatability: ±0.5% F.S. Max.		
Port size	1/8	1/4	1/4, 3/8, 1/2
	Set pressure (MPa)		0.005 to 0.2 0.005 to 0.4 0.005 to 0.8
			0.01 to 0.2 0.01 to 0.4 0.01 to 0.8

Vacuum Regulator: IRV

Page
14-5-15



Series	IRV1000	IRV2000	IRV3000
Application/Characteristics	Able to adjust the pressure for vacuum line		
Port size	1/8	1/4	1/4, 3/8, 1/2
	Set pressure		
	-100 to -1.3 kPa		

Precision Regulator: VEX1□3^ø

Page
14-6-1



Application/Characteristics	Large exhaust regulator Sensitivity: 0.2% F.S. Max. Repeatability: ±0.5% F.S. Max.
Port size	M5 x 8 1/8, 1/4, 3/8, 1/2, 3/4 1, 1 1/4, 1 1/2, 2
	Set pressure (MPa)

Pressure Control Equipment

MR Unit: **AMR**

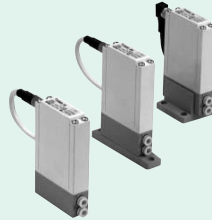
Page
14-7-1



Application/ Characteristics	Combined with mist separator and regulator Filtration 0.3 μm
Port size	1/4, 3/8, 1/2, 3/4, 1
Set pressure (MPa)	0.05 to 0.85

Compact Electro-pneumatic Regulator : **ITV000**

Page
14-8-1



Application/ Characteristics	Stepless control of air pressure proportional to an electrical signal
Port size	One-touch fitting ø4, ø5/32
Set pressure (MPa)	0.001 to 0.1 0.001 to 0.5 0.001 to 0.9 -1 to -100 kPa

Electro-pneumatic Regulator: **ITV1000/2000/3000**

Page
14-8-14



Series	ITV101□ /201□/301	ITV103□ /203□/303	ITV105□ /205□/305
Application/ Characteristics	Stepless control of air pressure proportion to an electrical signal		
Port size	1/8, 1/4	1/4, 3/8	1/4, 3/8, 1/2
Set pressure (MPa)	0.005 to 0.1	0.005 to 0.5	0.005 to 0.9

Electronic Vacuum Regulator : **ITV2090/2091**

Page
14-8-30



Application/ Characteristics	Pressure controlled steplessly by electric signals
Port size	1/4
Set pressure (MPa)	-1.3 to -80

Controller for Electro-pneumatic Regulator : **IC**

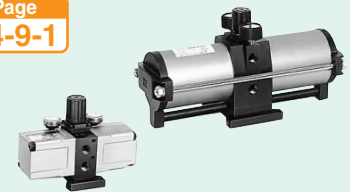
Page
14-8-35



Application/ Characteristics	Converts digital input signal into analog output signal
Port size	M5 female (Built-in sensor)
Set pressure (MPa)	0.1, 0.5, 0.9, -100 kPa

Booster Regulator: **VBA**

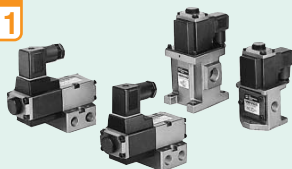
Page
14-9-1



Application/ Characteristics	Increases main line pressure up to two times. 2 times the primary pressure
Port size	1/4, 3/8, 1/2
Set pressure (MPa)	VBA111□: 0.2 to 2.0 VBA2□00: 0.2 to 1.0 VBA4□00: 0.2 to 1.0

Electro-pneumatic Proportional Control Valve : **VEF/VEP**

Page
14-9-11



Application/ Characteristics	Stepless control of air flow or pressure in proportion to elec- tric signals. Press-die cushions Pressure control of welding machine and low pressure casting Multi-stage speed control of air cylinder and rotation control of air motor
Port size	1/4, 3/8, 1/2

5 Port Electro-pneumatic Proportional Control Valve : **VER**

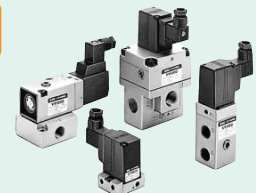
Page
14-9-17



Application/ Characteristics	Stepless control of cylinder and analogue pressure Applicable cylinder ø25 to ø125 Exhaust air throttling or B port pressure reduction pos- sible
Port size	1/4, 3/8, 1/2
Set pressure	0.1 to 0.9 MPa

Electro-pneumatic HYREG® : **VY1**

Page
14-10-1

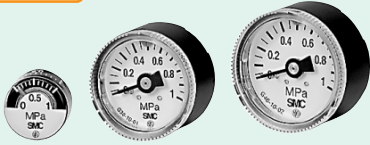


Application/ Characteristics	Pressure controlled stepless- ly by electric signals Cylinder thrust control Flow control of nozzle Pressure control of the tank
Port size	M5 x 8 1/8, 1/4, 3/8, 1/2, 3/4, 1 1 1/4, 1 1/2, 2
Set pressure	0.05 MPa to Supply pressure

Pressure Gauge Guide

Pressure Gauge for General Purpose : G□

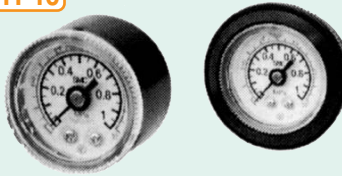
Page
14-11-3



Size (O.D.)	ø15, ø26, ø37 ø42, ø43, ø44
Connection thread	1/16, 1/8, 1/4

Oil-free/External Parts Copper-free Pressure Gauge : G46E

Page
14-11-10



Size (O.D.)	ø42
Connection thread	1/8, 1/4

Pressure Gauge for Clean Series (For 10-) : G49

Page
14-11-11



Size (O.D.)	ø44
Connection thread	1/4

Pressure Gauge for Clean Regulator : G46-□-□-SR^A_B

Page
14-11-12



Size (O.D.)	ø42
Connection thread	1/8, 1/4

Pressure Gauge with Switch : GP46

Page
14-11-13



Size (O.D.)	ø42
Connection thread	1/8, 1/4

Digital Pressure Sensor: GS40

Page
14-11-17



Features	Pressure switch function is added to the digital indication pressure gauge.
Set pressure	0 to 0.98 MPa

Compact Manometer: PPA

Page
14-12-1



Series	PPA100 (For high pressure)	PPA101 (For vacuum)	PPA102 (For low pressure)
Application/Characteristics	Pressure measurements can easily be taken any time, anywhere.		
Set pressure	-0.1 to 1 MPa	-101 to 10 kPa	-10 to 100 kPa
Applicable tubing size	ø4, ø6		

Lubrication Equipment

Large Flow Lubricator : *AL800/900*

Page
14-13-1



Application/ Characteristics	Individual lubrication
Port size	1 1/4, 1 1/2, 2
Bowl Capacity (cm ³)	440, 1000

Auto Feed Lube: *ALF400 to 900* Auto Feed Tank: *ALT-5/-9*

Page
14-13-6



Application/ Characteristics	With auto lubrication function
Port size	1/4, 3/8, 1/2, 3/4, 1 1/4, 1 1/2, 2
Bowl capacity (cm ³)	5000, 9000

D.P. Lube: *ALD600/900* D.P. Lube Unit: *ALDU600/900*

Page
14-13-11



Application/ Characteristics	Centralized multipoint lubrication
Port size	3/4, 1, 1 1/4, 1 1/2, 2
Bowl capacity (cm ³)	2000, 5000

Booster Lube: *ALB900*

Page
14-13-15



Application/ Characteristics	Centralized multipoint lubrication unit with non-differential pressure type
Port size	1, 2, 3 inch flange
Bowl capacity (cm ³)	5000

Air Preparation Equipment

Aftercoolers

Air Cooled Aftercooler: HAA

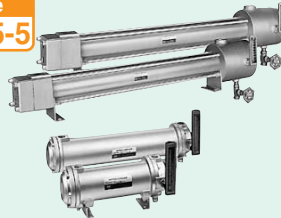
Page
14-15-1



Applicable compressor	7.5 to 35 kW
Max. flow capacity (ℓ/min (ANR))	1000 to 5700

Water Cooled Aftercooler: HAW

Page
14-15-5



Applicable compressor	2.2 to 110 kW
Max. flow capacity (ℓ/min (ANR))	300 to 18000

Air Tank

Air Tank: AT

Page
14-16-1



Port size	1/2 to 4B Flange
Tank capacity	100 to 3000 ℓ

Air Dryers

Refrigerated Air Dryer: IDU/IDF

Page
14-17-1



Series	IDU	IDF
Applicable compressor	2.2 to 75 kW	0.75 to 220 kW (Water cooled 75 to 370 kW)
Max. flow capacity (ℓ/min (ANR))	300 to 1500	100 to 36000

Air Dryer Stainless Steel Heat Exchanger: IDUS/IDFS

Page
14-18-1



Series	IDUS	IDFS
Applicable compressor	2.2 to 5.5 kW	5.5 to 11 kW
Max. flow capacity (ℓ/min (ANR))	310 to 740	740 to 1650

Heatless Air Dryer: ID

Page
14-19-1



Outlet air flow rate (ℓ/min (ANR))	80 to 780
Inlet air flow rate (ℓ/min (ANR))	100 to 975

Membrane Air Dryer: IDG

Page
14-19-16



Outlet air flow rate (ℓ/min (ANR))	50 to 500
Inlet air flow rate (ℓ/min (ANR))	62 to 625

Oil Mist Separators

Main Line Filter: *AFF*

Page
14-20-9



Filtration (μm)	3 (95% particle size collection)
Rated flow (ℓ/min (ANR))	300 to 42000
Port size	1/8 to 4B Flange

Mist Separator: *AM*

Page
14-20-16



Filtration (μm)	0.3 (95% particle size collection)
Rated flow (ℓ/min (ANR))	300 to 12000
Port size	1/8 to 2

Micro Mist Separator: *AMD*

Page
14-20-22



Filtration (μm)	0.01 (95% particle size collection)
Rated flow (ℓ/min (ANR))	200 to 12000
Port size	1/8 to 2

Micro Mist Separator with Prefilter : *AMH*

Page
14-20-30



Filtration (μm)	0.01 (95% particle size collection)
Rated flow (ℓ/min (ANR))	200 to 12000
Port size	1/8 to 2

Super Mist Separator: *AME*

Page
14-20-37



Filtration (μm)	0.01 (95% particle size collection)
Rated flow (ℓ/min (ANR))	200 to 12000
Port size	1/8 to 2

Water Separator

Water Separator: *AMG*

Page
14-20-1



Application/ Characteristics	It eliminates the waterdrops in the compressed air.
Max. flow capacity (ℓ/min (ANR))	300 to 12000
Port size	1/8 to 2

Odor Removal Filter

Odor Removal Filter: *AMF*

Page
14-20-42



Filtration (μm)	0.01 (95% particle size collection)
Rated flow (ℓ/min (ANR))	200 to 12000
Port size	1/8 to 2

Related Products

Auto Drain Valve: *AD402/600*
 Motor Operated Auto Drain: *ADM200*
 Heavy Duty Auto Drain: *ADH4000*
 Pressure Differential Gauge: *GD40-2-01*

Page
14-20-49

