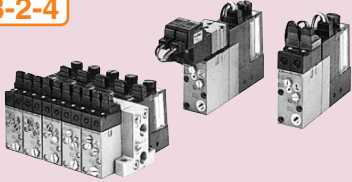


Vacuum Module

Vacuum Module: ZX

Page
13-2-4

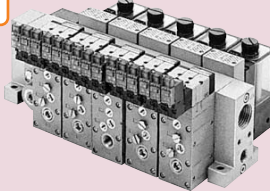


Features

- Most suitable for electronic parts or small precision parts weighing up to 100 g.
- Compatible with ejector systems and the vacuum pump systems.
- Modular design
- Adaptable for a manifold application.

Large Vacuum Module: ZR

Page
13-3-4



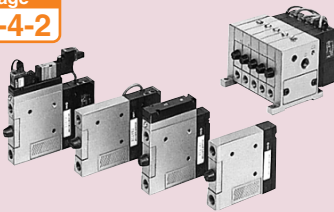
Features

- Necessary functions can be combined through a modular design.
- Adaptable for a manifold application.
- Functions such as a digital vacuum switch or a solenoid valve can be selected.
- Compatible with ejector systems and the vacuum pump systems.
- Double solenoids provide a selfholding function.

Vacuum Ejector

Vacuum Ejector: ZM

Page
13-4-2



Features

- Valves and switches are unitized.
- Adaptable for a manifold application.
- Maximum absorption flow rate is increased by 40%.
- Maximum vacuum pressure -84 kPa {-630 mmHG}

Vacuum Ejector with Solid State Timer: ZMA

Page
13-4-23

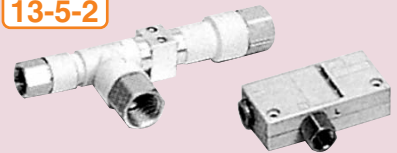


Features

- Incorporates solid state timer function for release valve control.
- Allows sharing of switch/valve power supply, and single line for suction signal.
- Timer can be easily adjusted without programming.

Vacuum Ejector: ZH

Page
13-5-2



Body ported

Box type

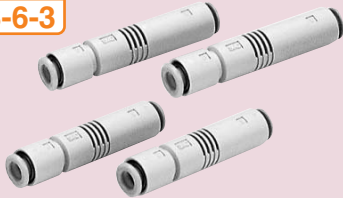
Features

- Nozzle diameter: $\phi 0.5$, $\phi 0.7$, $\phi 1.0$, $\phi 1.3$, $\phi 1.5$, $\phi 1.8$, $\phi 2.0$
- Composite formed resin nozzle and body
- Available in series of 2 types: box type and body ported type.

Vacuum Ejector

In-line Vacuum Ejector: ZU

Page
13-6-3

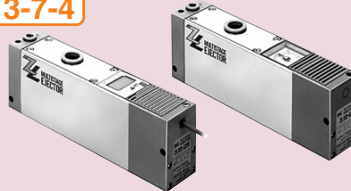


Features

- Vacuum port and supply port are located collinearly to facilitate piping.
- A lightweight construction is achieved through the use of the resin body.
- Nozzle diameter $\phi 0.5$: 6.5 g
 $\phi 0.7$: 7.0 g
- Built-in One-touch fittings (copper free countermeasures taken)

Vacuum Ejector: ZL

Page
13-7-4

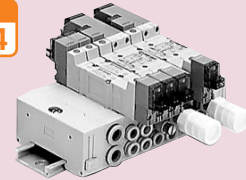


Features

- Suction flow rate is increased by a 3 stage diffuser construction.
- Functions such as a digital vacuum switch or a vacuum pressure gauge can be selected.

Vacuum Ejector: ZYY/ZYX

Page
13-8-4

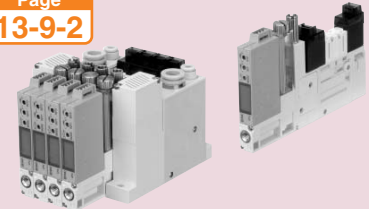


Features

- Ejector valve unit suitable for vacuum adsorption systems.

Compact Vacuum Ejector: ZQ

Page
13-9-2



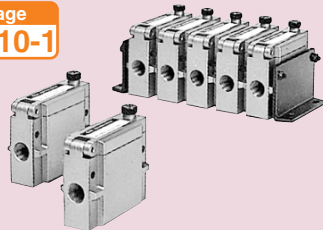
Features

- Body width 10 mm, Weight 109 g (Single unit with vacuum pressure switch and suction filter)
- With One-touch fittings
- Digital vacuum pressure switch with LED display

Air Suction Filter

Air Suction Filter: ZFA

Page
13-10-1

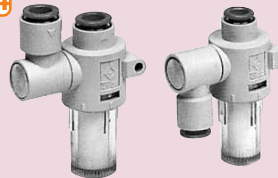


Features

- Prevents problems related to vacuum circuits or airborne contaminants.
- Provides a large filter element surface.

Air Suction Filter with One-touch Fittings : ZFB

Page
13-10-4

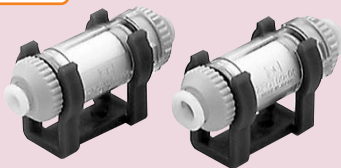


Features

- Prevents problems related to vacuum circuits or airborne contaminants.
- Vacuum tubes can be connected and removed by a one-touch operation.

Air Suction Filter, In-line Type with One-touch Fittings : ZFC

Page
13-10-7



Features

- IN/OUT straight piping
- One-touch fittings for easy installation and removal
- Light weight molded resin parts
- Cartridge type allows element replacement.

Vacuum Pad

Vacuum Pad: ZP

Page
13-11-2

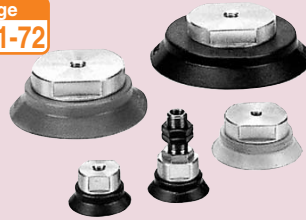


Features

- A variety of models accommodate a wide range of applications.
- Pad shapes: flat, flat with ribs, deep, and bellows shape
- Pad diameter: $\phi 2$ to $\phi 50$

Vacuum Pad: Large/Heavy Duty Type: ZPT/ZPX

Page
13-11-72

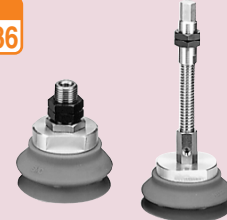


Features

- Most suitable for heavy or large workpieces such as CRT tubes and automobile bodies.
- Pad diameter: $\phi 40$ to $\phi 125$

Large Size Bellows: ZPT/ZPX

Page
13-11-86

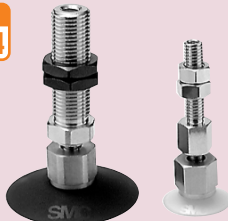


Features

- Most suitable for workpieces with a curved picking surface, heavy mass, or large size.
- Pad diameter: $\phi 40$ to $\phi 125$

Ball Joint Type: ZPT/ZPR

Page
13-11-104



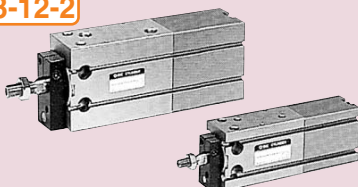
Features

- Ball joint type ideal for adsorption on slanted work surfaces.
- Pad diameters: $\phi 10$ to $\phi 50$

Free Mount Cylinder for Vacuum

Free Mount Cylinder for Vacuum : ZCUK

Page
13-12-2



Features

- In the rectangular, compact cylinder Series CU which has a high level of mounting precision, a vacuum passage is provided in the rod to facilitate the mounting of a vacuum pad and to save space.
- Standard vacuum pads ($\phi 2$ to $\phi 50$) can be mounted.

Drain Separator for Vacuum

Drain Separator for Vacuum : AMJ

Page
13-13-3



Features

- Remove water droplets from air by simply installing in vacuum equipment connection lines. Effective for removing water droplets from the air sucked into vacuum pumps and ejectors, etc.

Vacuum System Peripherals Related Products

- Vacuum Regulator: Series IRV...13-14-2
- Electronic Vacuum Regulator: Series ITV209...13-14-3
- Directional Control Valve...13-14-4
- Vacuum Pressure Switch...13-14-9
- Pressure Gauge for Vacuum/ Series GZ46...13-14-12
- Air Filter...13-14-13
- Regulator...13-14-13
- Filter Regulator...13-14-13
- Mist Separator...13-14-13
- Fittings & Tubing...13-14-14
- Flow Control Equipment...13-14-15
- Manifold Specification Sheet...13-14-18