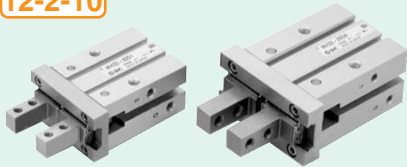


Parallel Style

Linear Guide Parallel Style : **MHZ2**

Page
12-2-10



Series	Bore size
MHZA2-6 (Compact)	6
MHZ2 (Standard)	6, 10, 16, 20, 25
MHZL2 (Long stroke)	10, 16, 20, 25
Features	General purpose compact grippers with integral guide that provides high rigidity and high accuracy.

Linear Guide with Dust Cover : **MHZJ2**

Page
12-2-42



Series	Bore size
MHZAJ2-6 (Compact)	6
MHZJ2	6, 10, 16, 20, 25
Features	Dusttight, drip-proof construction Dust cover material selectable

Linear Guide Low Profile : **MHF2**

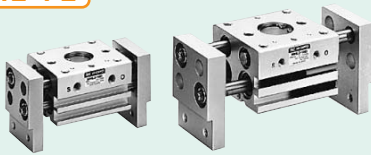
Page
12-3-8



Bore size	Features
8, 12, 16, 20	Height is approximately the 1/3 size of an equivalent Series MHZ2.

Wide Opening: **MHL2**

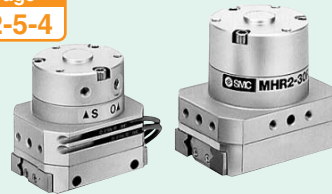
Page
12-4-2



Bore size	Features
10, 16, 20, 25, 32, 40	A wide style with a large open/close stroke. Optimum for holding large-size workpieces that have dimensional variances. The double piston provides a large amount of gripping force.

Rotary Actuated 2 Finger : **MHR2/MDHR2**

Page
12-5-4



Bore size	Features
Nominal 10, 15, 20, 30	A vertically compact configuration and a high level of precision have been achieved through the use of a rotary actuator as the source of its drive force. Compliant for clean room in Class 10 degree.

Rotary Actuated 3 Finger : **MHR3/MDHR3**

Page
12-5-18



Bore size	Features
Nominal 10, 15	A vertically compact configuration and a high level of precision have been achieved through the use of a rotary actuator as the source of its drive force. Compliant for clean room in Class 10 degree.

Slide Guide Square Body 2 Finger : **MHK2**

Page
12-6-4

Square body

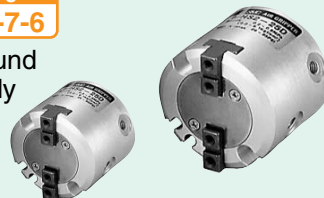


Bore size	Features
12, 16, 20, 25	Available for various applications by dust-protected, drip-proof, external force resistant, and weather-resistant type. Depending on the environment, dust cover materials and stainless steel 304 fingers are selectable.

Slide Guide Round Body 2 Finger : **MHS2**

Page
12-7-6

Round body

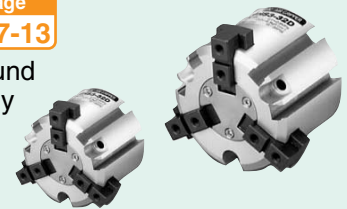


Bore size	Features
16, 20, 25, 32, 40, 50, 63	Vertically compact due to its wedge-shaped cam construction. Optimum for operations in which an external force like press-fitting, etc. is applied.

Slide Guide Round Body 3 Finger : **MHS3**

Page
12-7-13

Round body



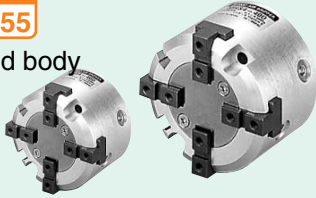
Series	Bore size
Standard: MHS3	16, 20, 25, 32, 40, 50, 63, 80, 100, 125
With dust cover: MHSJ3	16, 20, 25, 32, 40, 50, 63, 80
Through-hole: MHSH3	
Long stroke: MHSL3	16, 20, 25, 32, 40, 50, 63, 80, 100, 125

Parallel Style

Slide Guide Round Body 4 Finger : *MHS4*

Page
12-7-55

Round body



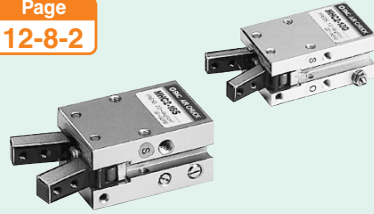
Bore size 16, 20, 25, 32, 40, 50, 63

Features Vertically compact due to its wedge-shaped cam construction. Optimally holds rectangular workpieces for positioning operations.

Angular Style

Standard: *MHC2*

Page
12-8-2

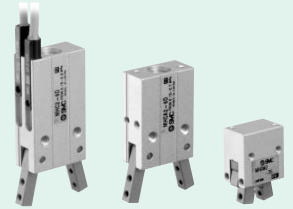


Bore size 10, 16, 20, 25

Features A large holding moment is achieved through a double piston construction.

Compact: *MHC2/MHCA2/MHCM2*

Page
12-8-14



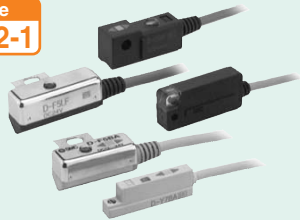
Bore size 6, 7 (MHCM2)

Features Angular style air gripper Series MHC now also available in ø6 size. Series MHCM2 now available for further miniaturization.

Related Products

Auto Switch: *D-*

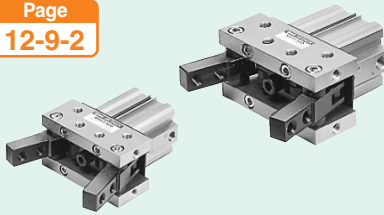
Page
12-12-1



Type	Features
Reed switch	General purpose type 2-color indication type
Solid state switch	General purpose 2-color indication type 2-color indication type with diagnostic output Water resistant (2-color indication type) With timer, Magnetic field resistant Heat resistant 2-color indication type Wide range detection type

Toggle: *MHT2*

Page
12-9-2

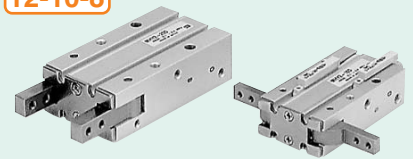


Bore size 32, 40, 50, 63

Features A large holding moment in the vicinity of the support point is achieved through a toggle construction. The workpiece can be held in place even then there is an interruption in the supply of compressed air.

Cam Style 180° Angular: *MHY2*

Page
12-10-8

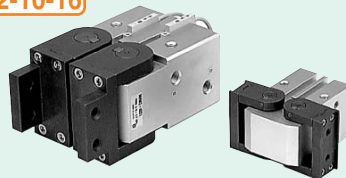


Bore size 10, 16, 20, 25

Features Lightweight and compact through the use of a cam mechanism.

Rack & Pinion Style 180° Angular: *MHW2*

Page
12-10-16



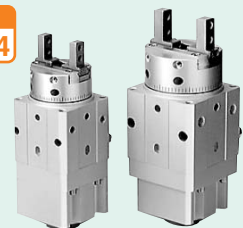
Bore size 20, 25, 32, 40, 50

Features A unique seal construction resulting in shortened overall length and dust-proofing countermeasures allow it to be used for removing workpieces from machine tools or for holding workpieces.

Rotary Gripper

Rotary Gripper: *MRHQ*

Page
12-11-4



Bore size 10, 16, 20, 25

Features The gripper function and the rotation function have been integrated in a compact package.